

CLUB HUB
IMPROVEMENT

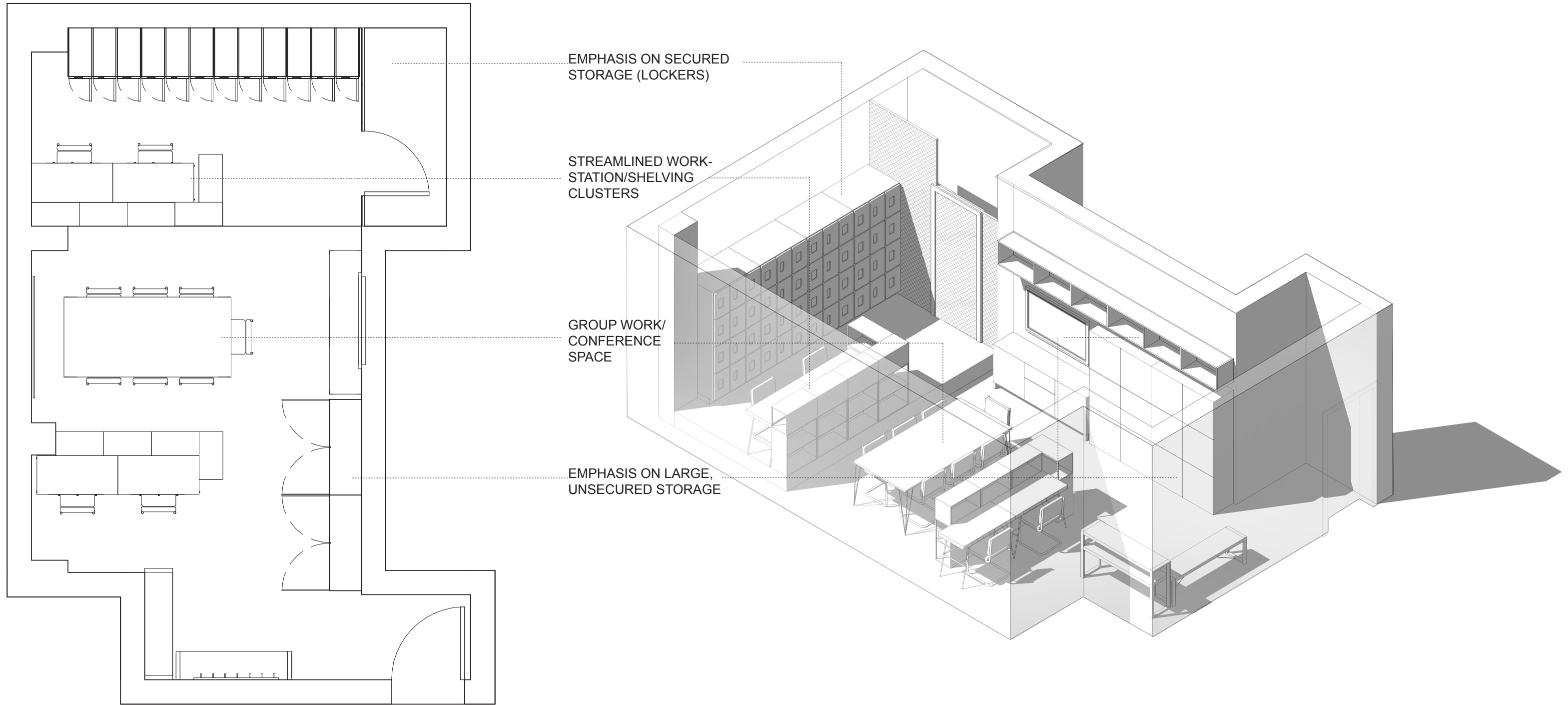
WINTER, 2017

CURRENT CONDITIONS



- UNNECESSARILY CRAMPED AND CROWDED
- LACK OF STORAGE
- INEFFICIENT WORKSTATION LAYOUT
- NO CONFERENCE/GROUP WORK AREA
- NEED OF SECURED STORAGE

PORPOSED



PRODUCTS



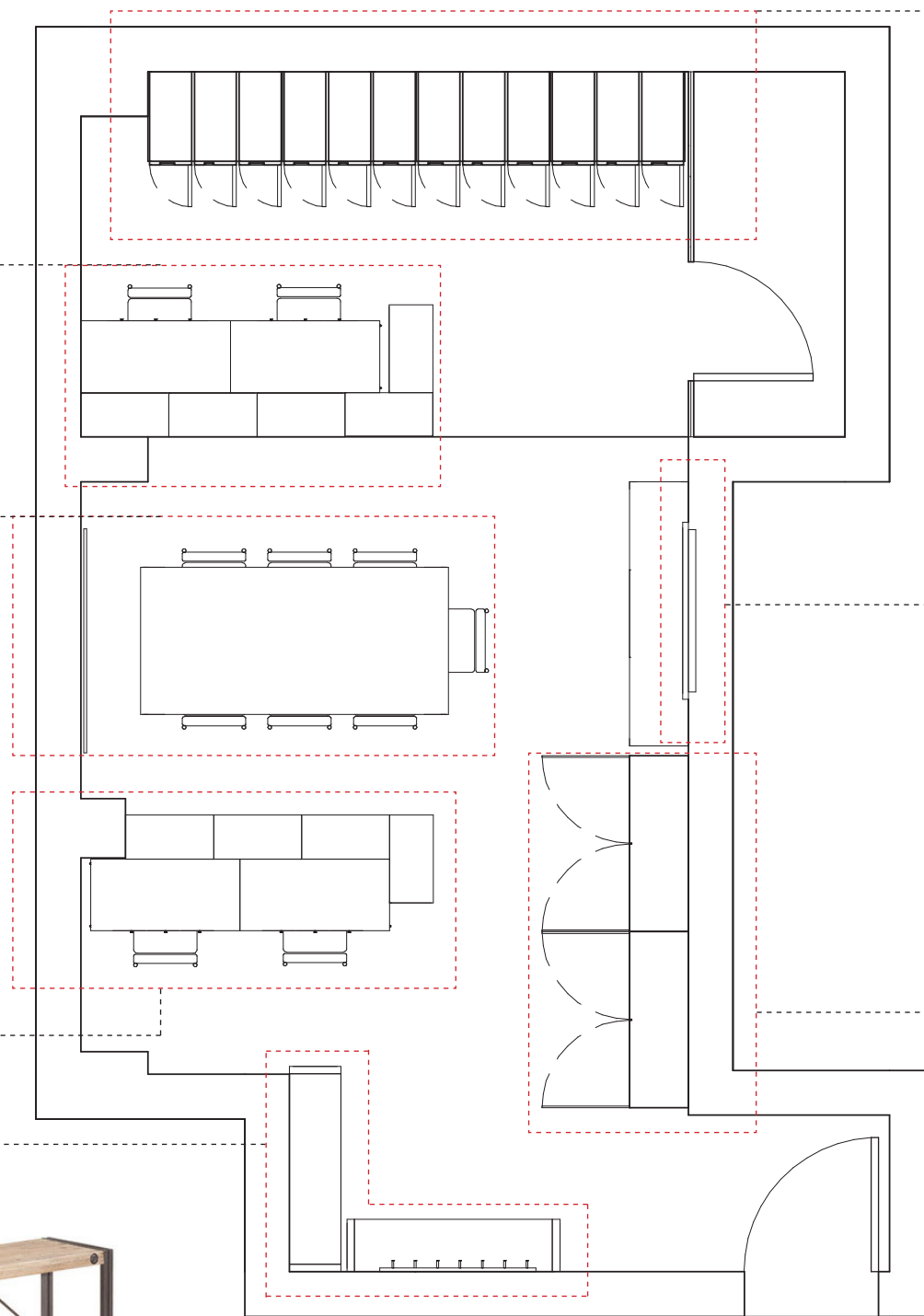
- IKEA LILLASEN WORKTABLE (2)
- IKEA PS 2014 MODULAR SHELVING UNITS (5)

- WAYFAIR RENO 82.5" CONFERENCE TABLE (1)



- IKEA LILLASEN WORKTABLE (2)
- IKEA PS 2014 MODULAR SHELVING UNITS (5)

- BURGESS ACCENT TABLE (1)
- BURGESS ENTRY BENCH (1)



- SALSBURRY 12"(W)X18"(H)X21"(D) 4-TIER, 3-WIDE LOCKERS (3)



- 55" TV FOR PRESENTATION/GROUP WORK



- IKEA BESTA LARGE VOLUME STORAGE (2)



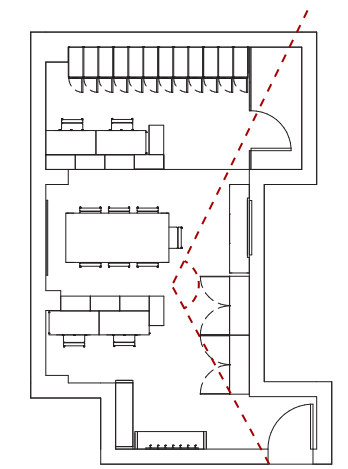
J.HAN

MCGILL EUS

3480 RUE UNIVERSITY
MONTREAL, QUEBEC
H3A 0E9

514-398-4396
space.director@mcgilleus.ca

Issues/ Revisions



Phase

CONCEPT

Project

CLUB SPACE

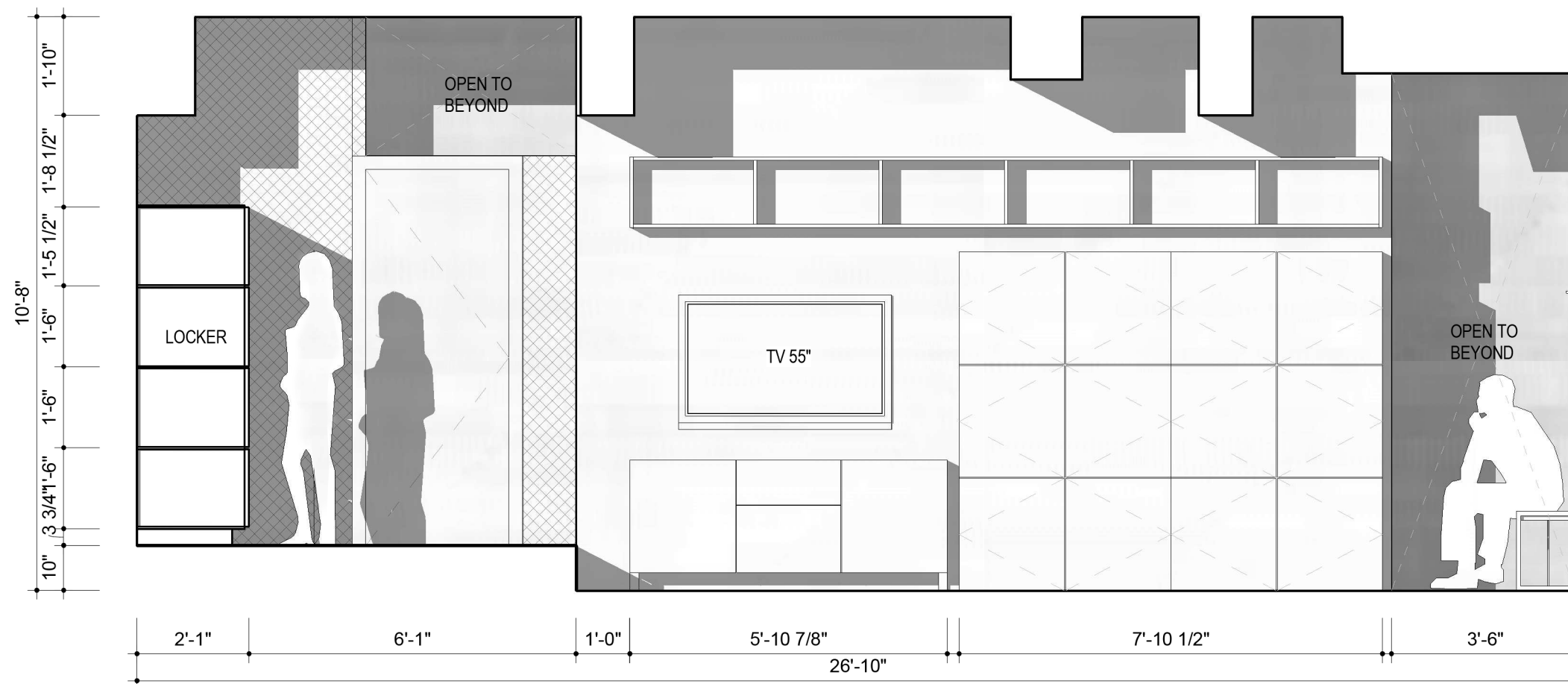
A-601

ELEVATION EAST

SCALE: 3/8" = 1'-0"

DATE: 01/09/2017

DRAWN BY: JH



1

Elevation 1 - a
SCALE: 3/8" = 1'-0"

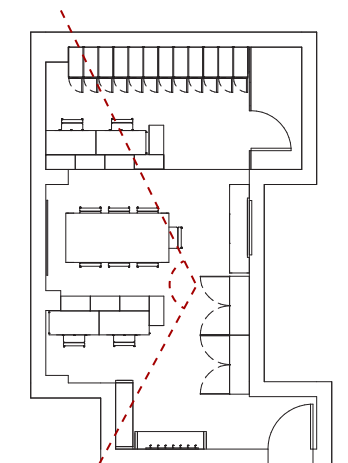
J.HAN

MCGILL EUS

3480 RUE UNIVERSITY
MONTREAL, QUEBEC
H3A 0E9

514-398-4396
space.director@mcgilleus.ca

Issues/ Revisions



Phase
CONCEPT

Project

CLUB SPACE

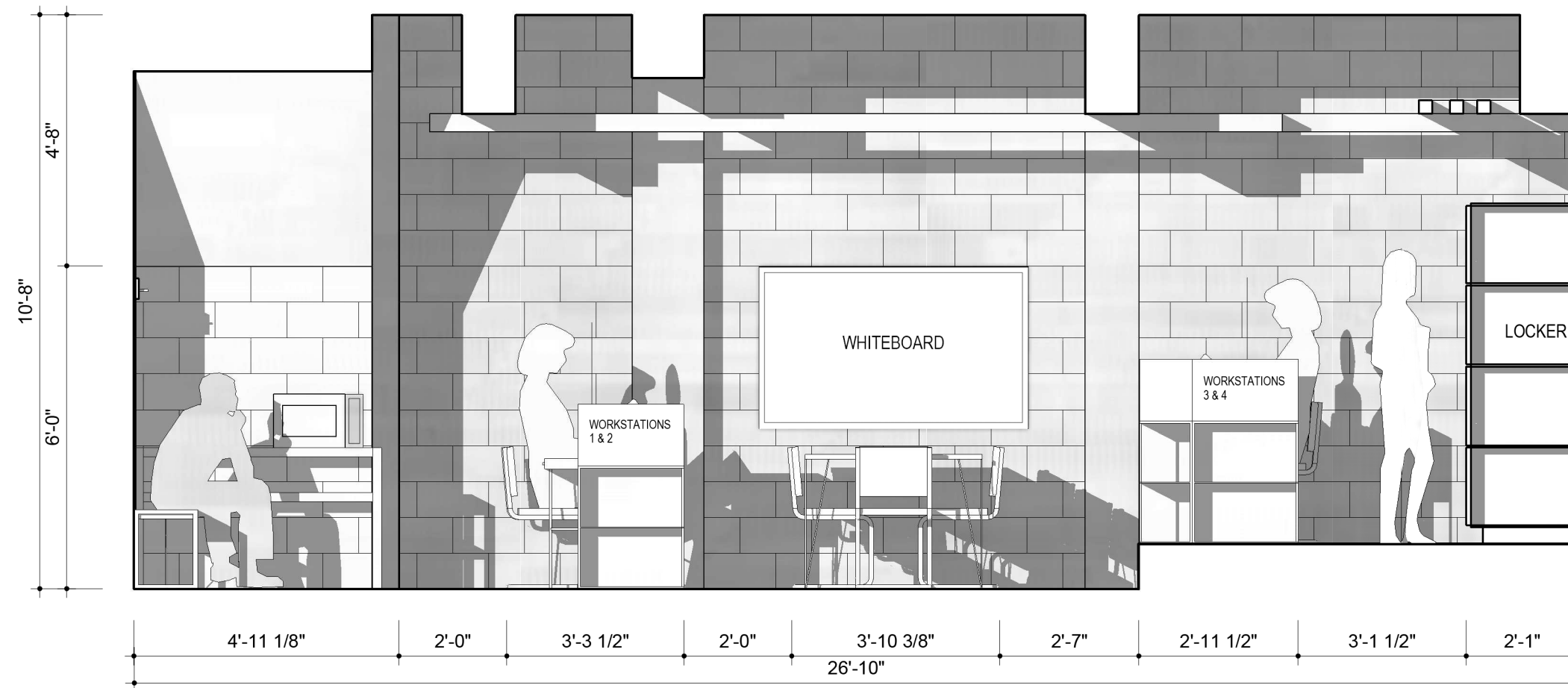
A-602

ELEVATION WEST

SCALE: 3/8" = 1'-0"

DATE: 01/09/17

DRAWN BY: JH



1 Elevation 1 - c
SCALE: 3/8" = 1'-0"

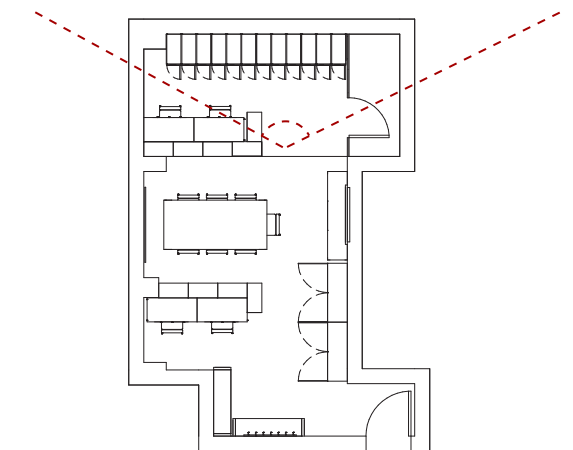
J.HAN

MCGILL EUS

3480 RUE UNIVERSITY
MONTREAL, QUEBEC
H3A 0E9

514-398-4396
space.director@mcgilleus.ca

Issues/ Revisions



Phase

CONCEPT

Project

CLUB SPACE

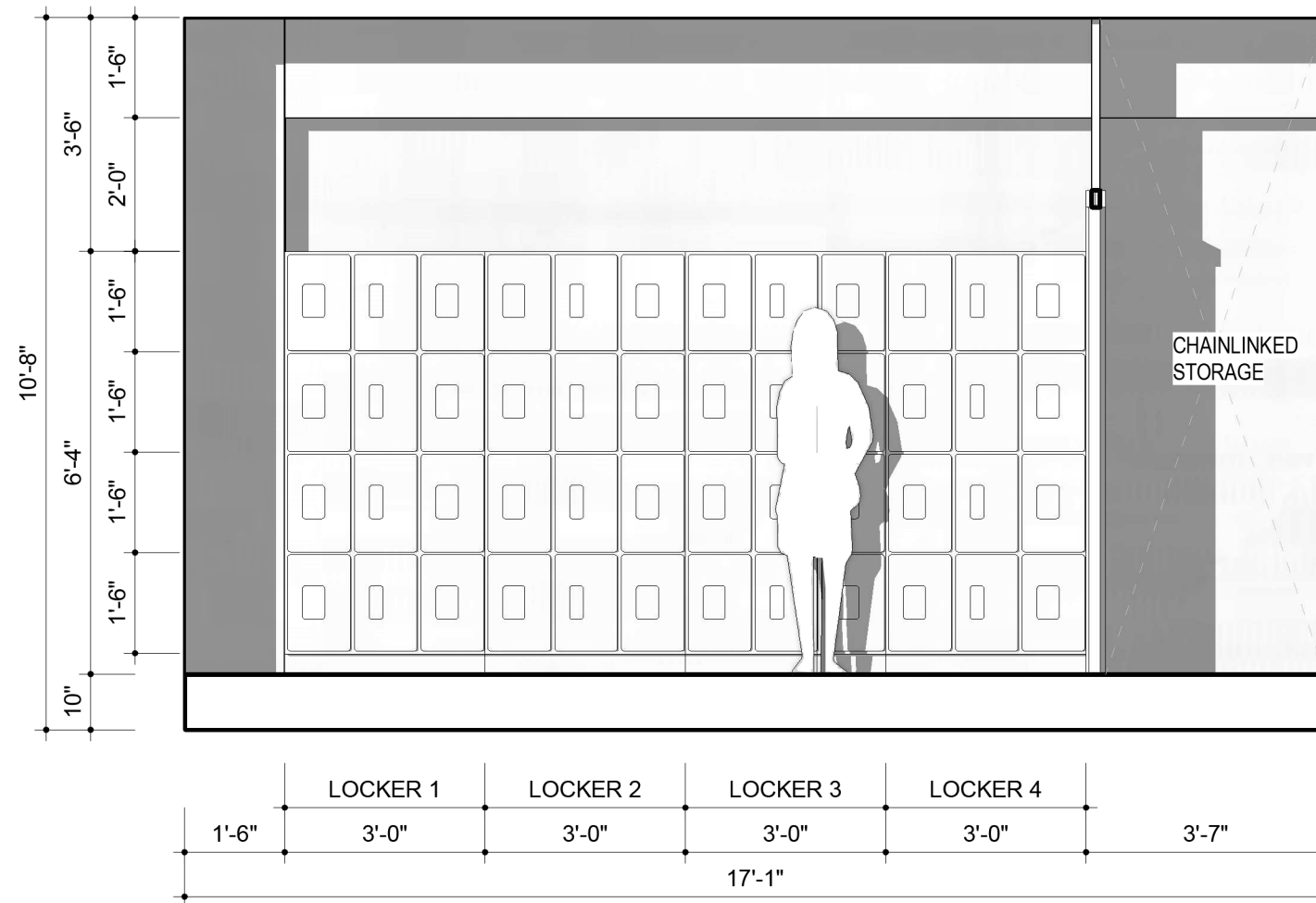
A-603

ELEVATION SOUTH

SCALE: 3/8" = 1'-0"

DATE: 01/09/17

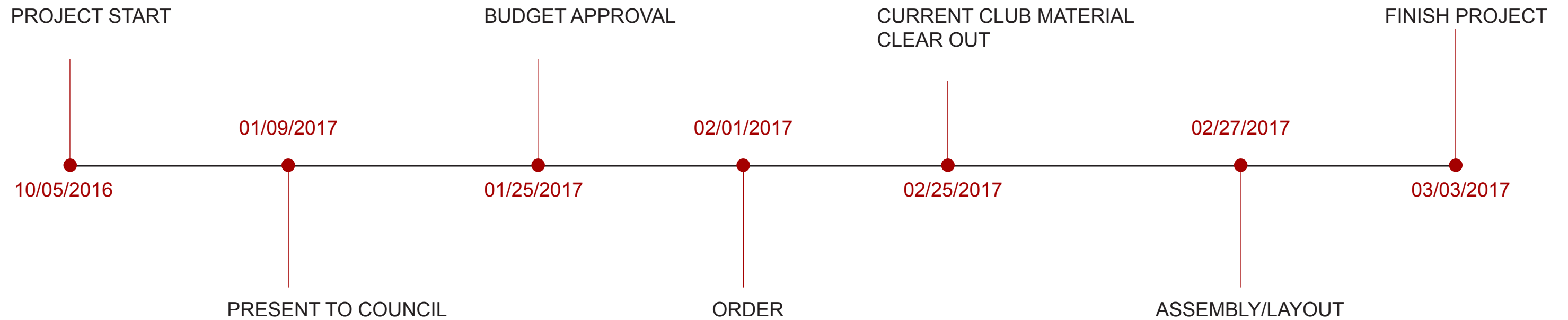
DRAWN BY: JH



1 Elevation 1 - d
SCALE: 3/8" = 1'-0"

SEE SEPARATE VIDEO FILE

TIMELINE



BUDGET \$15,046.37 CAD

Category	Quantity	Expenses		Notes (optional)
		Unit Cost	Subtotal	
SALSBURY 4-TIER LOCKER, MODEL #34361MAP DELIVERY, CUSTOM, TAX, + CONTINGENCY	4	\$ 1,137.00	\$ 4,548.00	http://www.globalindustrial.ca/p/storage/lockers/wood- SHIPS FROM CALIFORNIA
IKEA VILMAR CHAIR 198.897.48	12	\$ 59.99	\$ 719.88	http://www.ikea.com/ca/en/catalog/products/S19889748/
IKEA LILLASEN WORK DESK 902.782.77	4	\$ 179.00	\$ 716.00	http://www.ikea.com/ca/en/catalog/products/90278277/
IKEA BESTA 6-DOOR STORAGE 391.367.43	2	\$ 450.00	\$ 900.00	http://www.ikea.com/ca/en/catalog/products/S79136755/?query=791.367.43
IKEA BESTA STORAGE CREDENZA 791.366.99	1	\$ 305.00	\$ 305.00	http://www.ikea.com/ca/en/catalog/products/S79136699/?query=791.366.99
IKEA PS 2014 BAMBOO 2-TEIR STORAGE 190.117.20	9	\$ 98.00	\$ 882.00	http://www.ikea.com/ca/en/catalog/products/S39011700/?query=390.117.20
IKEA PS 2014 BAMBOO SINGELE STORAGE 590.116.76 DELIVERY	9	\$ 49.00	\$ 441.00	http://www.ikea.com/ca/en/catalog/products/S59011676/?query=590.116.76
			\$ 99.00	
STRUCTUBE RENO ACIA 82.5" TABLE DELIVERY	1	\$ 879.00	\$ 879.00	https://www.structube.com/en/reno-solid-acacia-wood-dining-table-82-5
			\$ 70.00	
WAYFAIR BURGESS CONSOLE TABLE SKU: TADN2884	1	\$ 720.00	\$ 720.00	https://www.wayfair.ca/Burgess-Console-Table-TADN2884-TADN2884.html
WAYFAIR BURGESS BENCH SKU: TADN3966 DELIVERY	1	\$ 385.00	\$ 385.00	https://www.wayfair.ca/Brooklyn-Wood-Bench-TADN3966.html FREE
			\$ -	
BESTBUY 55" TV TV WALL MOUNT 25' HDMI CABLE DELIVER	1	\$ 1,000.00	\$ 1,000.00	MODEL UPON SPECIFICATION
	1	\$ 150.00	\$ 150.00	http://www.bestbuy.ca/en-ca/product/insignia-insignia-47-80-tilting-tv-wall-
	1	\$ 15.00	\$ 15.00	http://www.bestbuy.ca/en-CA/product/konex-konex-tm-25-foot-25-ft-hd CAN PICKUP
			\$ -	
MCGILL LABOR FOR MOUNTING TV			\$ 500.00	
OVERALL CONTINGENCY 5%			\$ 716.49	

Source	Specific	Revenues		Notes (optional)
		Revenues		
Total Revenues				
Total Expenses	\$15,046.37			
Amount requested (Rev - Exp)*	\$15,046.37			

*A negative value is how much is being requested of the EUS

Direct any questions to the EUS Budget Director @
budget.director@mcgilleus.ca

Committee
Name: _____

Committee
Chair: _____

Phone: _____

Email: _____

Reviewed by the
EUS Exec in
charge?

Accepted by the
EUS VP
Finance?

- CONSERVATIVE ESTIMATE

- ACTUAL COST MOST LIKELY BELOW
\$15,000

- STILL WAITING ON LOCAL SUPPLIERS

- Meuble Nuance
- Meubles Actuels
- Craig's Office
- Etc

- ALTERNATIVE, EQUIVALENT PRODUCTS
FROM LOCAL SUPPLIERS WHERE POSSI-
BLE, FOR ADDITIONAL SAVING